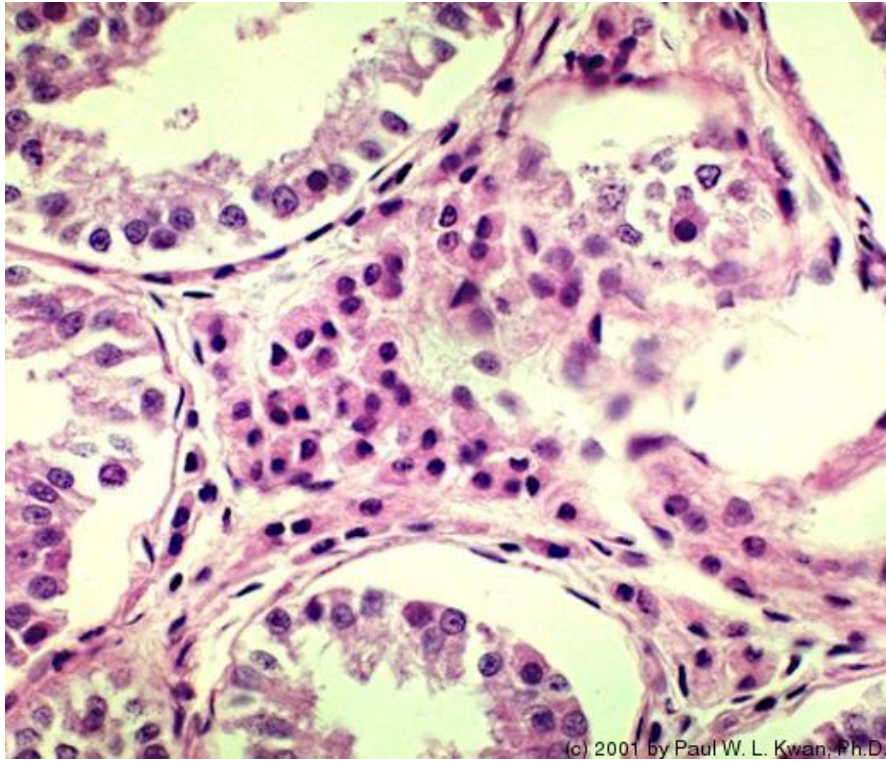
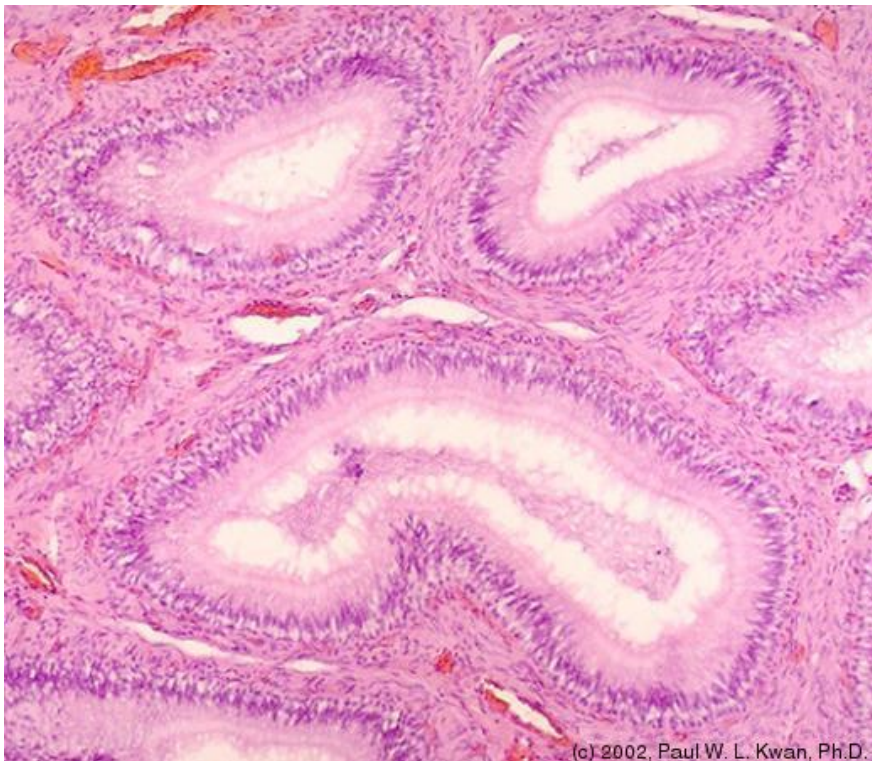


1. Interstitial cells of Leydig in the canine testis



2. Epididymis of Boar



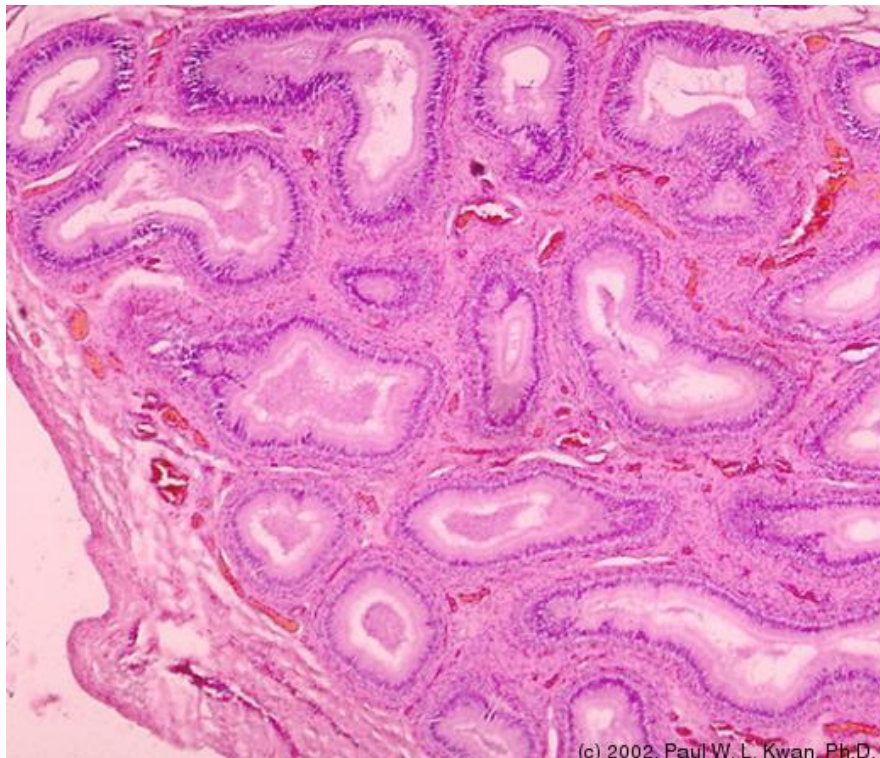
3.

### Bulbourethral Gland of a Boar



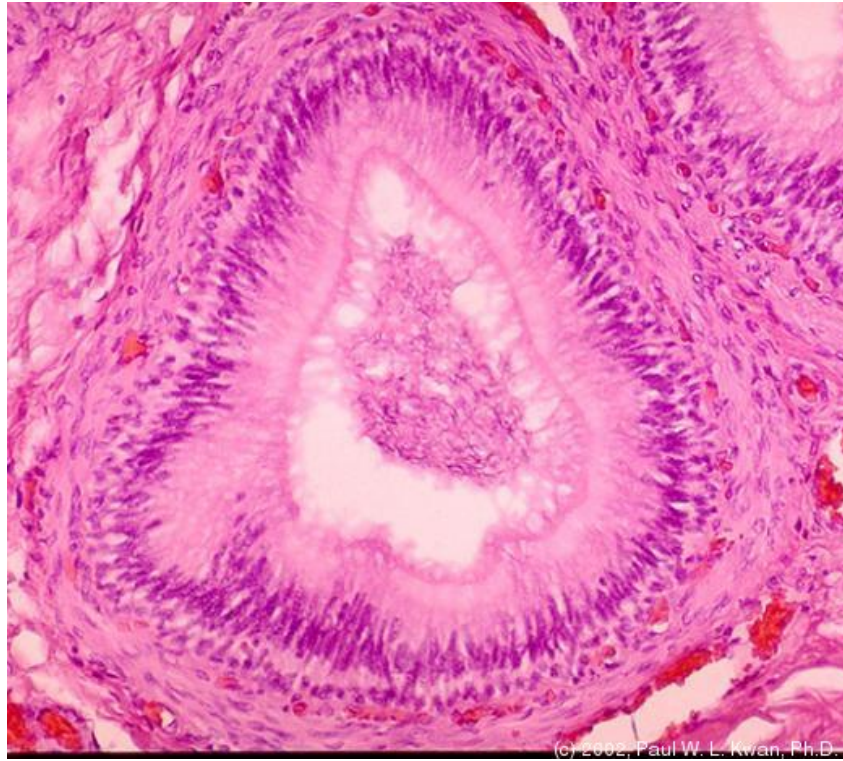
4.

### Epididymis of the Boar at Low Power



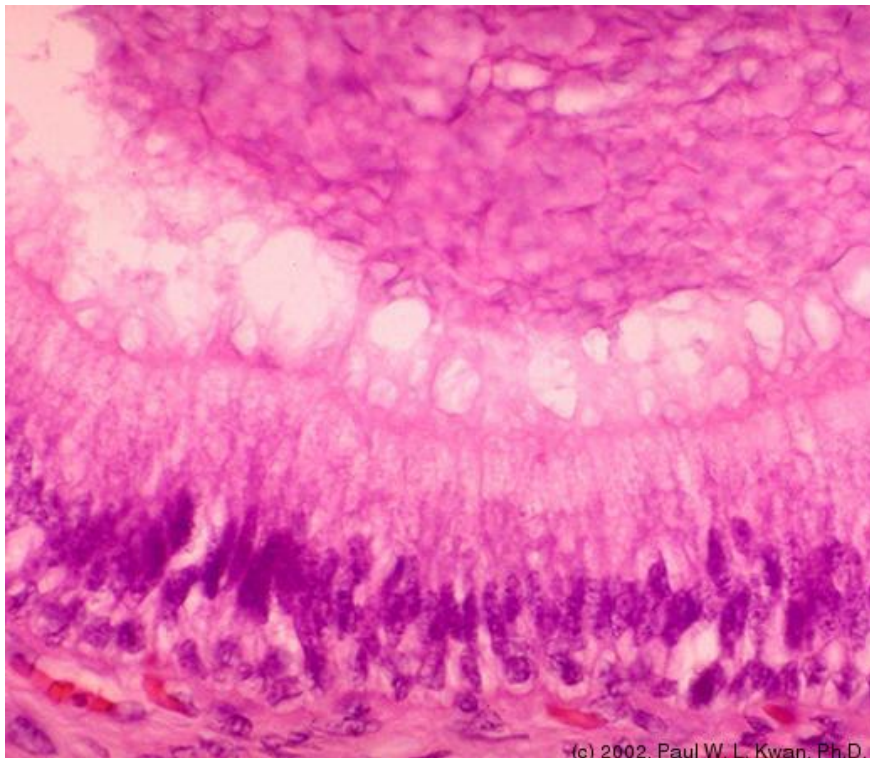
5.

## Epididymis of the Boar

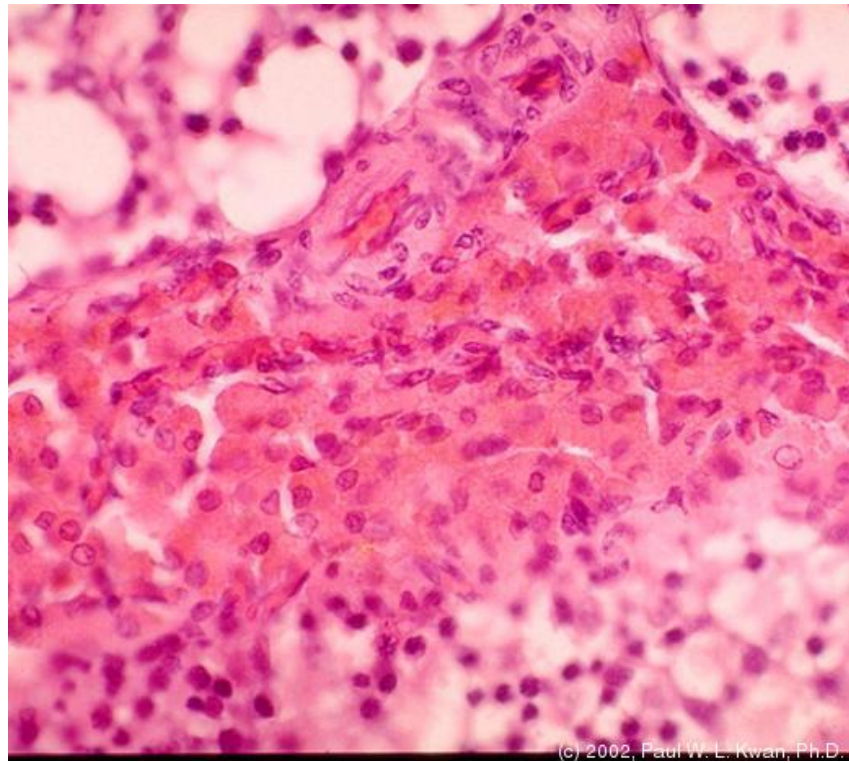


6.

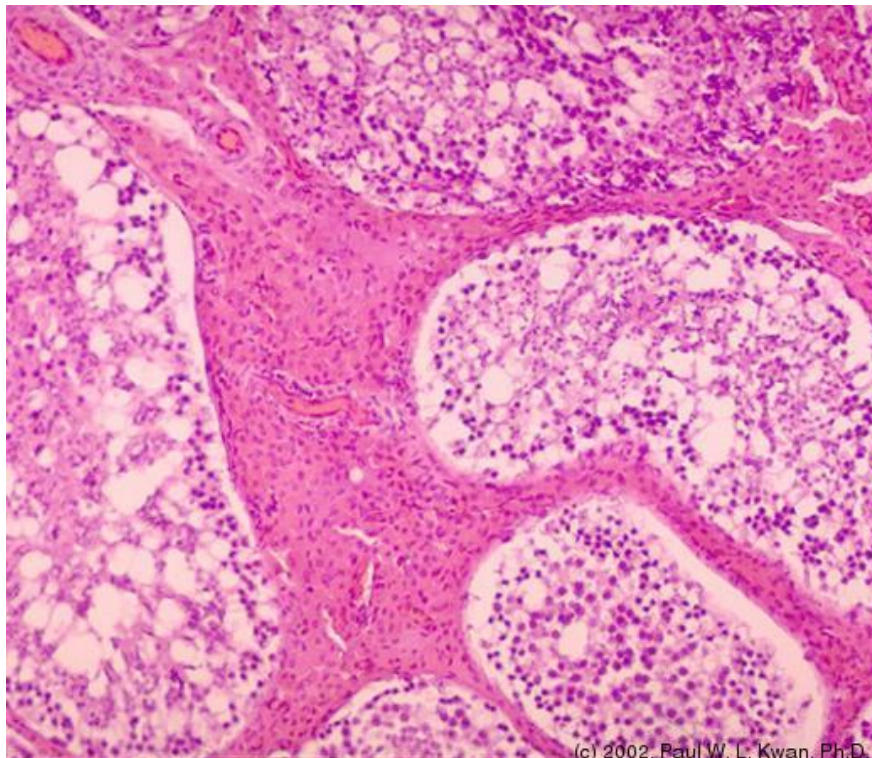
## Pseudostratified Epithelium in the Epididymis of the Boar



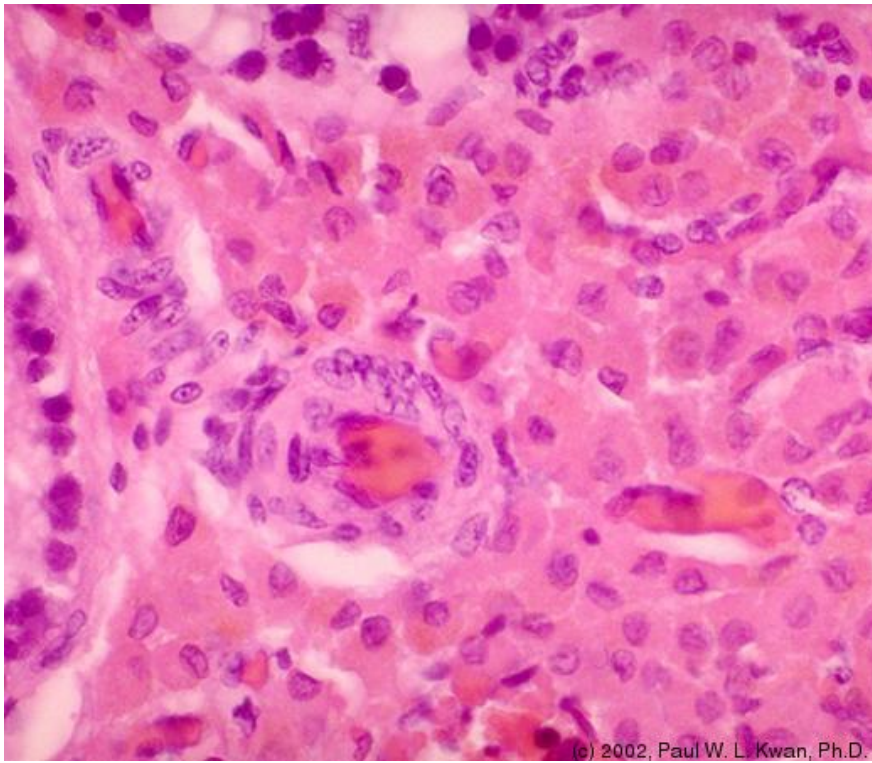
7. Leydig cells in the testis of a boar.



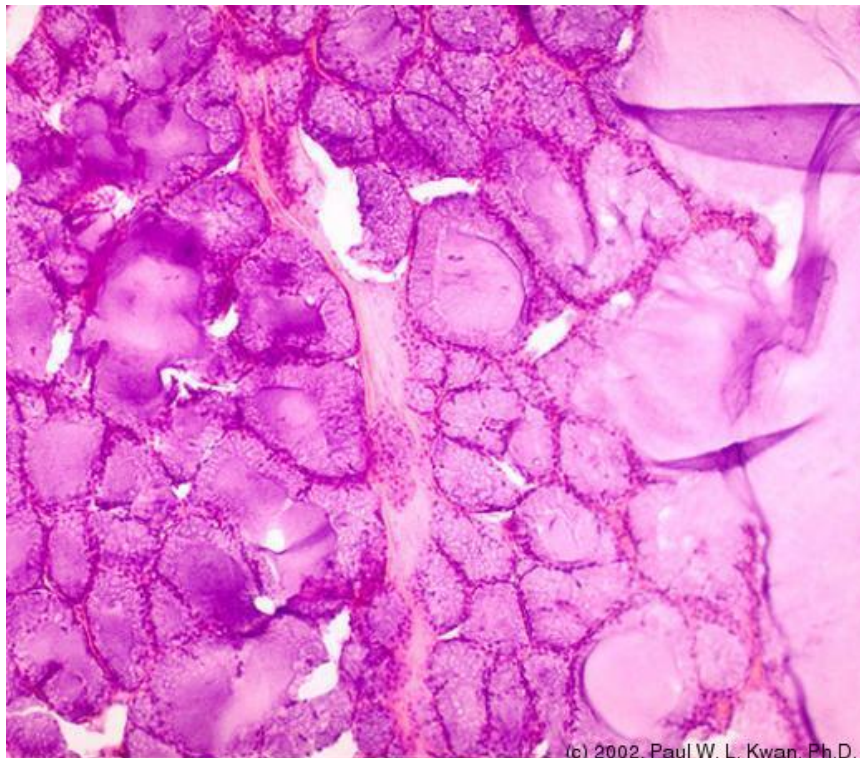
8. Leydig cells in the testis of a boar.



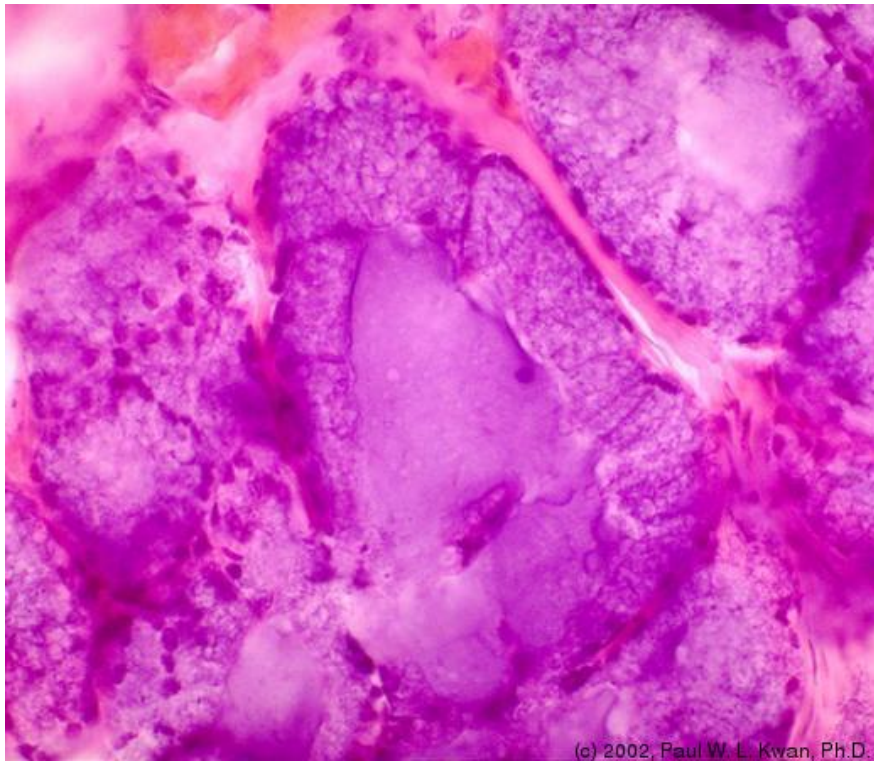
9. Higher Magnification of Leydig Cells in the Testis of a Boar...



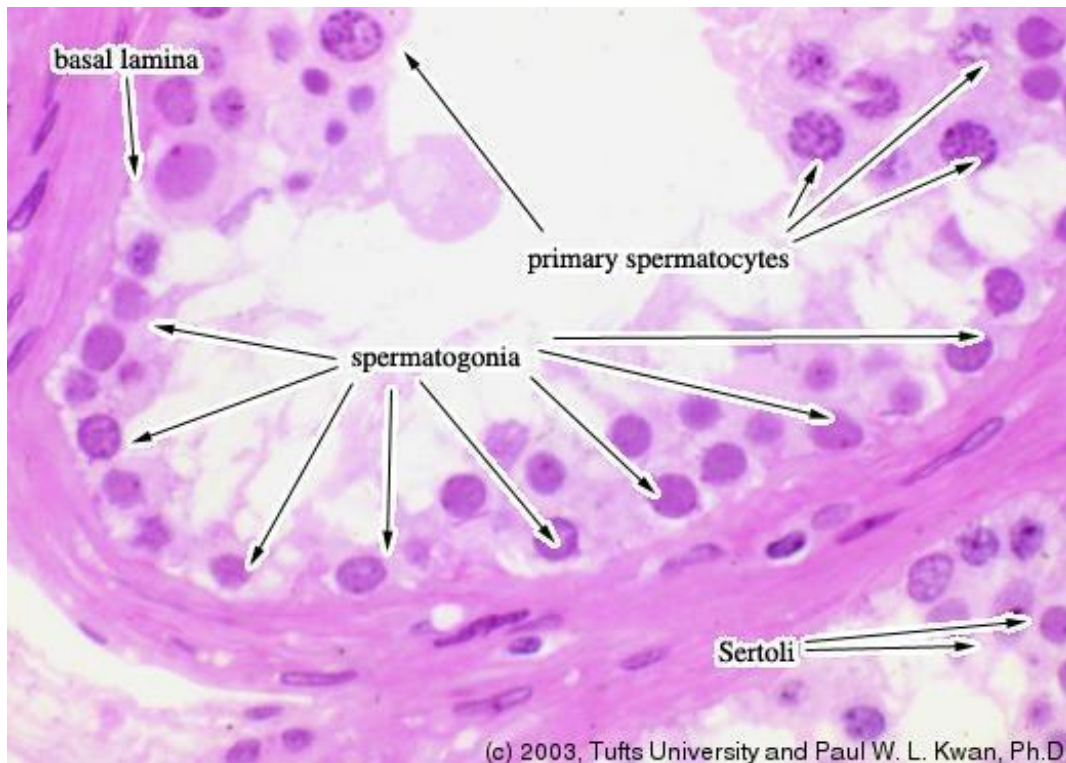
10. Bulbourethral Gland of a Boar



11. Secretory Acini in Bulbourethral Gland of the Boar

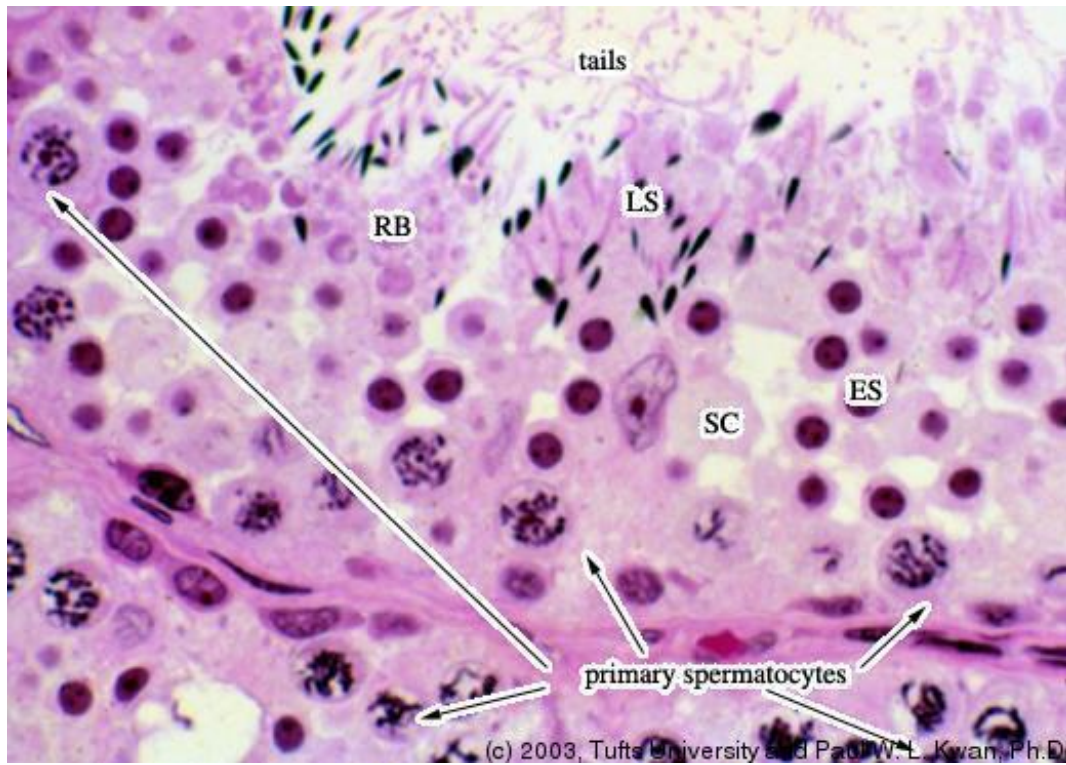


12. Spermatogonia, Primate Seminiferous Epithelium



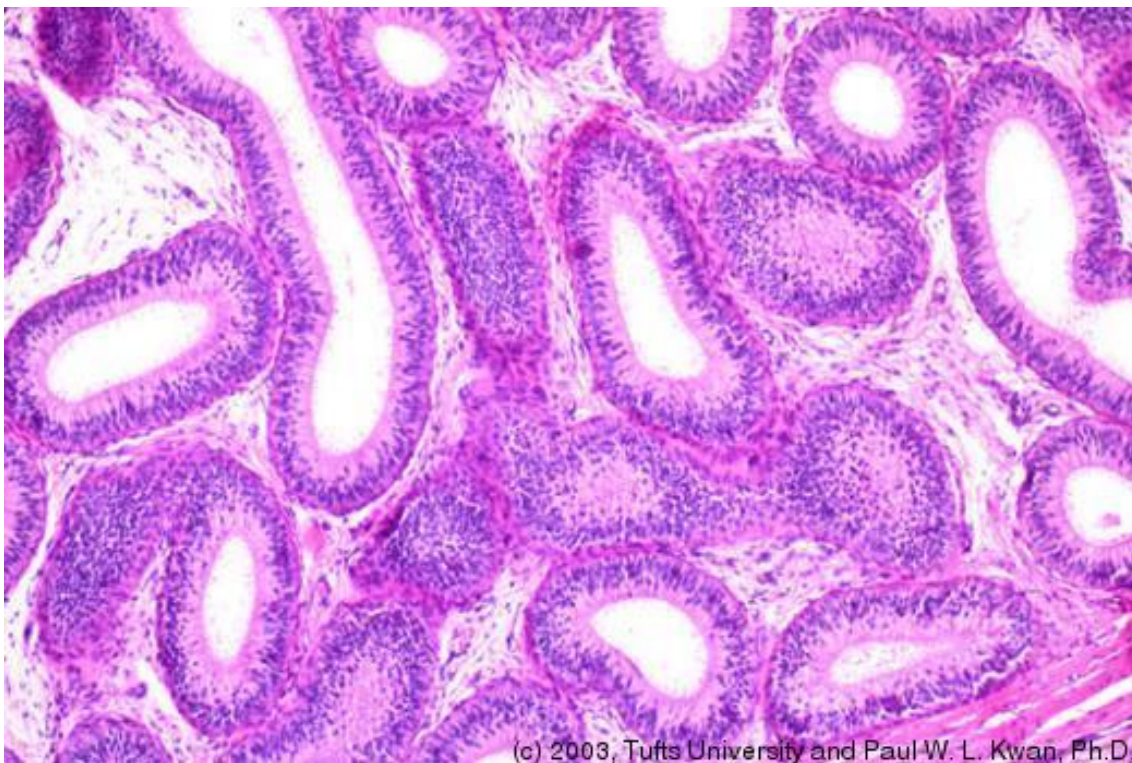
13.

### Primary Spermatocytes

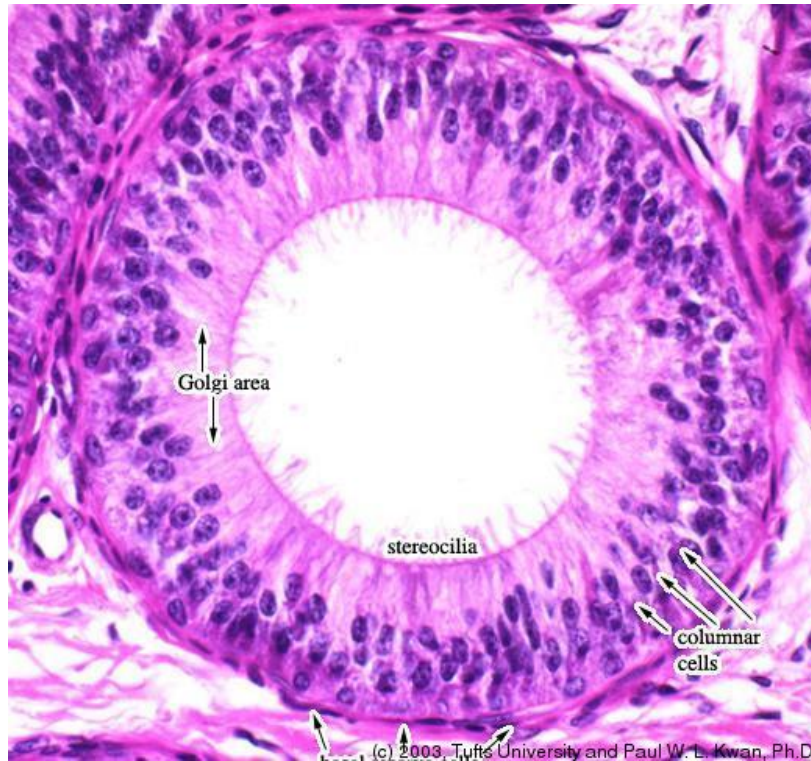


14.

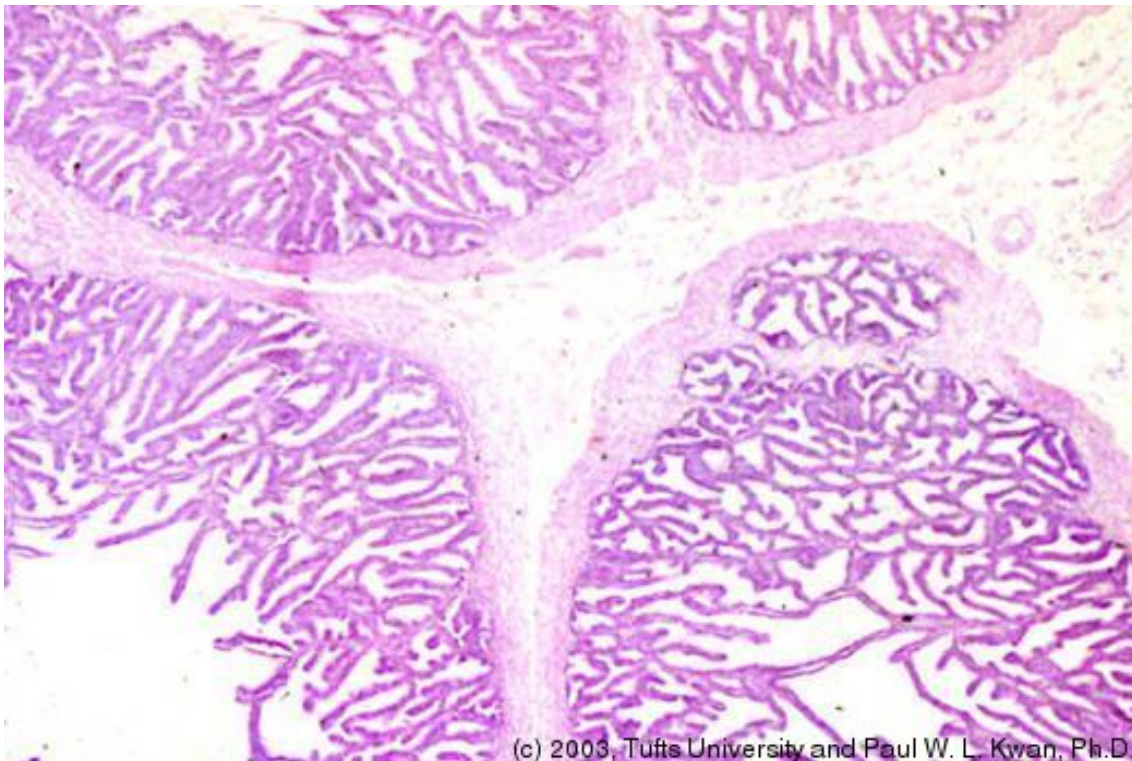
### Ductus Epididymis, Low Power, Dog



15. Ductus Epididymis, Higher magnification, Dog



16. Seminal Vesicle, Low Power, Primate



17.

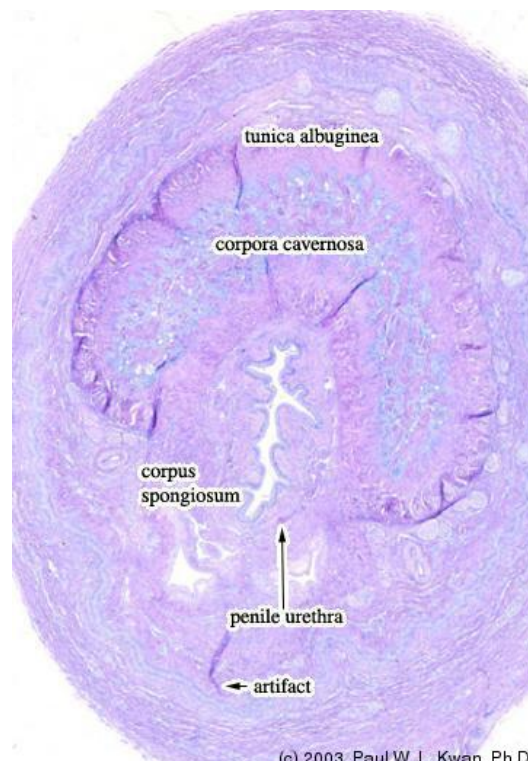
### Seminal Vesicle, Dog



(c) 2005, TUSK Support

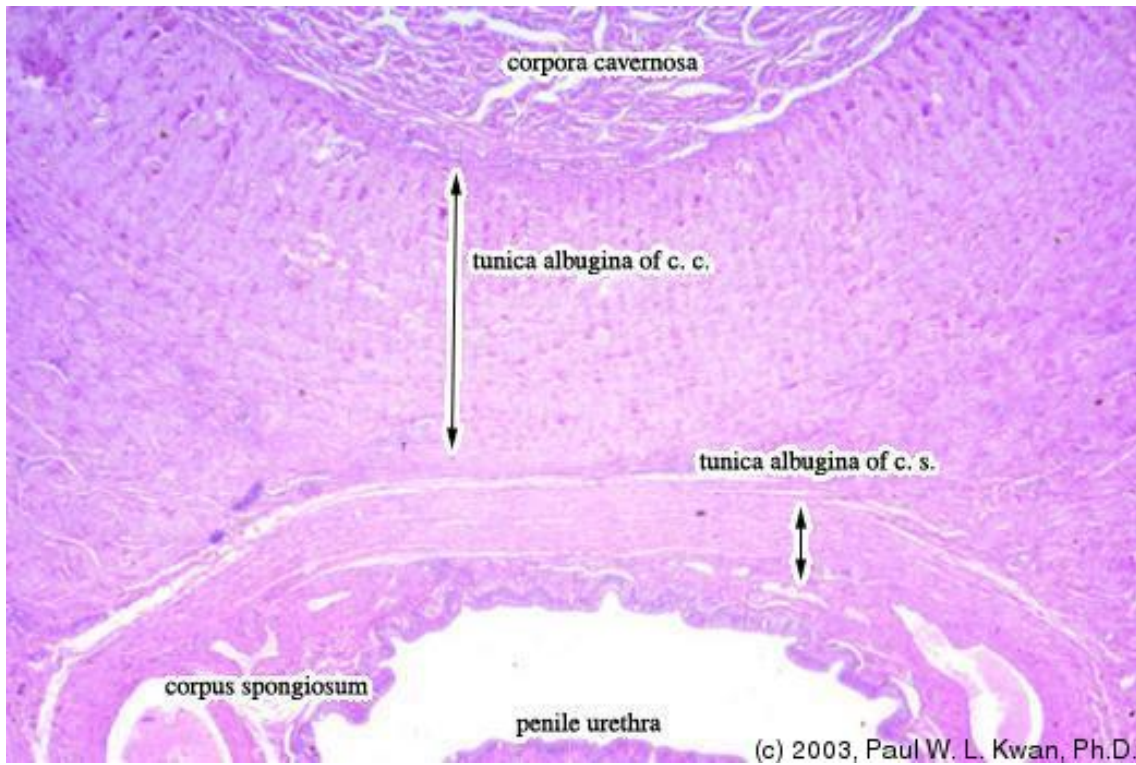
18.

### Penis of a Pig, Low Power



(c) 2003, Paul W. L. Kwan, Ph.D.

19. Comparison of Corpora Cavernosa and Corpus Spongiosum



20. Corpus Spongiosum, Monkey Penis

